



**Flat 4, The Cridlands, 34**

Leamington Spa **CV32 6JE**

Guide Price £249,000

# Flat 4, The Cridlands, 34

A beautifully presented two double bedroom first floor apartment to the rear of this Victorian Conversion situated in the sought-after location of North Leamington Spa and easy walking to the town centre with all amenities. The apartment in brief has stairs rising to the first floor, has an open plan kitchen, lounge / dining room, two double bedrooms and a main bathroom. Due to its location within the development, it benefits from no road noise and one allocated parking space.

A great rental investment, first time buyer or lock up and leave. The current tenant is paying £1,300 per month.

Call us today for more information or to book in an internal viewing.

## LOCATION

Kenilworth Road is prestigiously situated a short distance north of central Leamington Spa and being within easy reach of Leamington's wide array of amenities including shops and independent retailers, restaurants, parks and artisan coffee shops. Additionally, there are excellent local road links available out of the town to neighbouring towns and centres, along with links to major road routes, whilst Leamington Spa railway station provides regular rail services to many destinations including London and Birmingham.

## ON THE GROUND FLOOR

## COMMUNAL ENTRANCE HALLWAY

Leading to adjacent apartments, stairs rising to the first floor and door leading to:-

## FLAT 4

### ENTRANCE HALLWAY

With gas central heating radiator and doors leading off to adjacent rooms.

### LOUNGE/DINER

5.25m x 3.42 (17'2" x 11'2")  
Having gas central heating radiator, double glazed window to the side elevation, space for lounge furniture and doors leading to:-

### KITCHEN

3.40m x 2.22m (11'1" x 7'3")  
The kitchen in brief comprises of worktop surfaces, cupboard space, wall mounted units, built-in fridge freezer, oven unit, four ring gas hob, space for washing machine, combination boiler and double glazed window to the side elevation.

### BEDROOM ONE

3.57m x 3.41m (11'8" x 11'2")  
Having gas central heating radiator, double glazed window to the side elevation and space for bedroom furniture.

### BEDROOM TWO

3.50m x 3.39m (11'5" x 11'1")  
Having gas central heating radiator, double glazed window to the side elevation and space for bedroom furniture.

### BATHROOM

4.60m x 1.41m (15'1" x 4'7")  
Having a low level WC, sink unit, bath with shower above, heated towel rail, tiled flooring, part tiled walls and a double glazed window to the side elevation.

### DIRECTIONS

Postcode for sat-nav - CV32 6JE.

### TENURE

## Features

Victorian Conversion Set Over Four Floors

Allocated parking

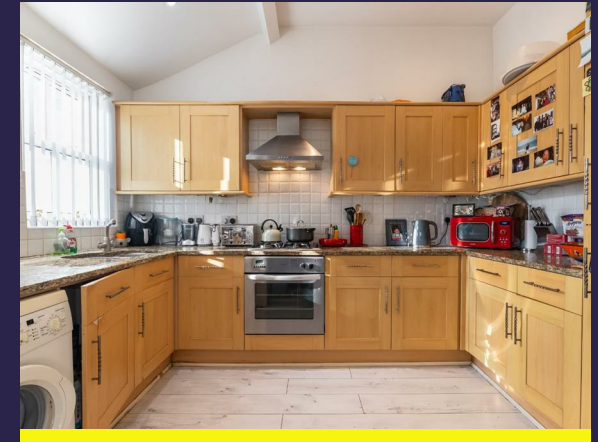
Beautifully Presented Throughout

Sought After Location - North Leamington Spa

Two Double Bedrooms

No Onward Chain

EPC Rating C





# Floorplan

Internal Living Area 716sq ft / 65.55m<sup>2</sup>



THIS FLOORPLAN IS PROVIDED WITHOUT WARRANTY OF ANY KIND. THE PUBLISHER DISCLAIMS ANY WARRANTY INCLUDING, WITHOUT LIMITATION, SATISFACTORY QUALITY OR ACCURACY OF DIMENSIONS

## General Information

### Tenure

Leasehold

### Fixtures & Fittings

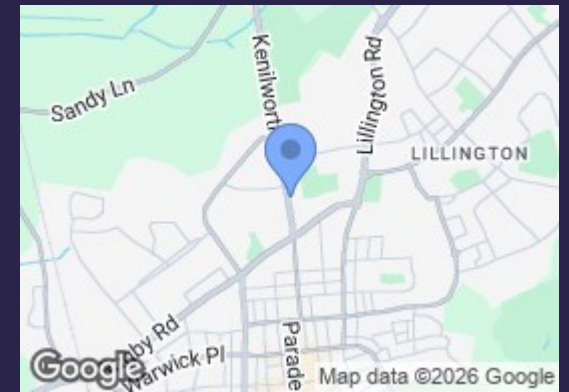
Specifically excluded unless mentioned in these sales particulars.

### Services

We understand that mains water, gas, electricity and drainage are connected to the property. We have not carried out any form of testing of appliances, central heating or other services and prospective purchasers must satisfy themselves as to their condition and efficiency.

### Council Tax

Band C - Warwick District Council



### Energy Efficiency Rating

	Current	Potential
Very energy efficient - lower running costs		
(92 plus) <b>A</b>		
(81-91) <b>B</b>		
(69-80) <b>C</b>	77	77
(55-68) <b>D</b>		
(39-54) <b>E</b>		
(21-38) <b>F</b>		
(1-20) <b>G</b>		
Not energy efficient - higher running costs		
<b>England &amp; Wales</b>	EU Directive 2002/91/EC	

## Contact us

01926 888998

leamington@wiglesworth.com

## Visit us

14 Euston Place, Leamington Spa,  
Warwickshire, CV32 4LY

wiglesworth.com